

PARIS XVIIE - SQUARE LAMARTINE - PRIVATE RECEPTION AND FAMILY MAN

6 330 000 €

Ref 86947208D

Paris 16ème - Mansion 4459 sq ft

VANEAU
Luxury Real Estate



About this property

Exceptional 415 m² townhouse, just a stone's throw from Square Lamartine, in the heart of the 16th arrondissement, offering a rare, elegant and family-friendly living environment. With its east-west exposure, it combines charm, luminosity and top-of-the-range amenities, all within easy reach of shops, transport and the most sought-after educational establishments. The first floor features a vast, bright living room, an elegant dining room, a kitchen/dining room opening onto a terrace and a 90 m² garden planted with trees, and a guest toilet. The second floor features four bedrooms, one with direct access to a 20 m² terrace, two dressing rooms, a shower room and a bathroom with toilet. On the second floor, a quiet master suite overlooking the garden, a dressing room, a bathroom with toilet, two other bedrooms and a shower room with toilet. The top floor features a magnificent 85 m² rooftop with 360° views, ideal for entertaining or relaxing. The roof top features an 80 m² terrace with summer kitchen. The basement features a counter-current swimming pool, sauna, family room, additional studio and laundry room.

Vaneau Collection Privée

✉ collection-privée@vaneau.fr

P +33 (0)1 53 10 15 15

Vaneau Collection Privée –
Luxury Real Estate Agency in
Paris

19, Avenue Raymond
Poincaré 75016 Paris

Price : 6 330 000 €

Surface : 4459 sq ft

Rooms : 10

Bedrooms : 7

Floors : 3

Bathrooms : 2

Shower rooms : 3

Garden : Yes

Cellar : Yes

Terrace : Yes

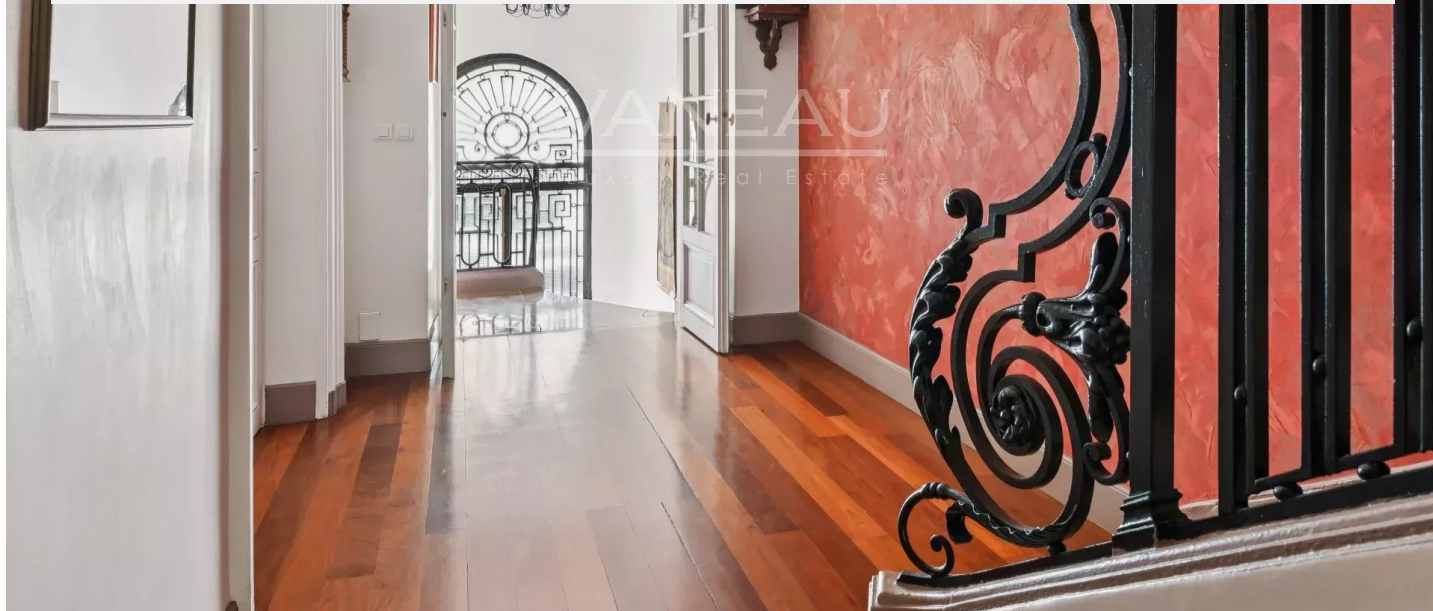
**PARIS XVIIE - SQUARE LAMARTINE - PRIVATE
RECEPTION AND FAMILY MAN**

6 330 000 €

Ref 86947208D

Paris 16ème - Mansion 4459 sq ft

VANEAU
Luxury Real Estate



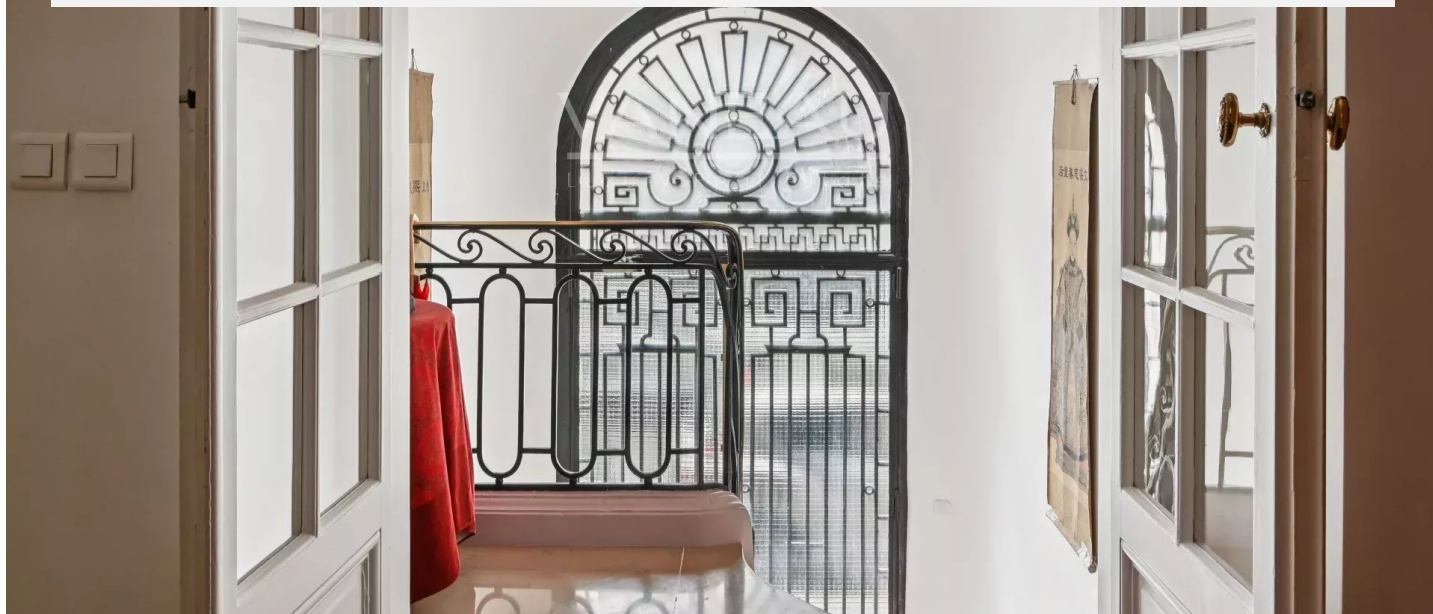
PARIS XVIIE - SQUARE LAMARTINE - PRIVATE RECEPTION AND FAMILY MAN

6 330 000 €

Ref 86947208D

Paris 16ème - Mansion 4459 sq ft

VANEAU
Luxury Real Estate





VANEAU LOCATION

Une équipe dédiée à Paris,
Neuilly et Boulogne



VANEAU

Immobilier de prestige depuis
1972



VANEAU VIAGER

30 ans d'expérience en vente
viagère



VANEAU BUREAUX & COMMERCES

+10 000 offres disponibles

VANEAU C'EST AUSSI



VANEAU PATRIMOINE

Dispositifs de défiscalisation,
SCPI, Assurances Vie



VANEAU DIGITAL NEUF

La plate-forme digitale 100%
immobilier neuf



GESTION LOCATIVE

GTF, plus de 7 000 lots gérés à
Paris



COURTAGE CRÉDITS

Exell Crédit immobiliers
Assurances emprunteurs

140 collaborateurs

1200 signatures par an

1000 immeubles par an

2.5 milliards d'actifs gérés